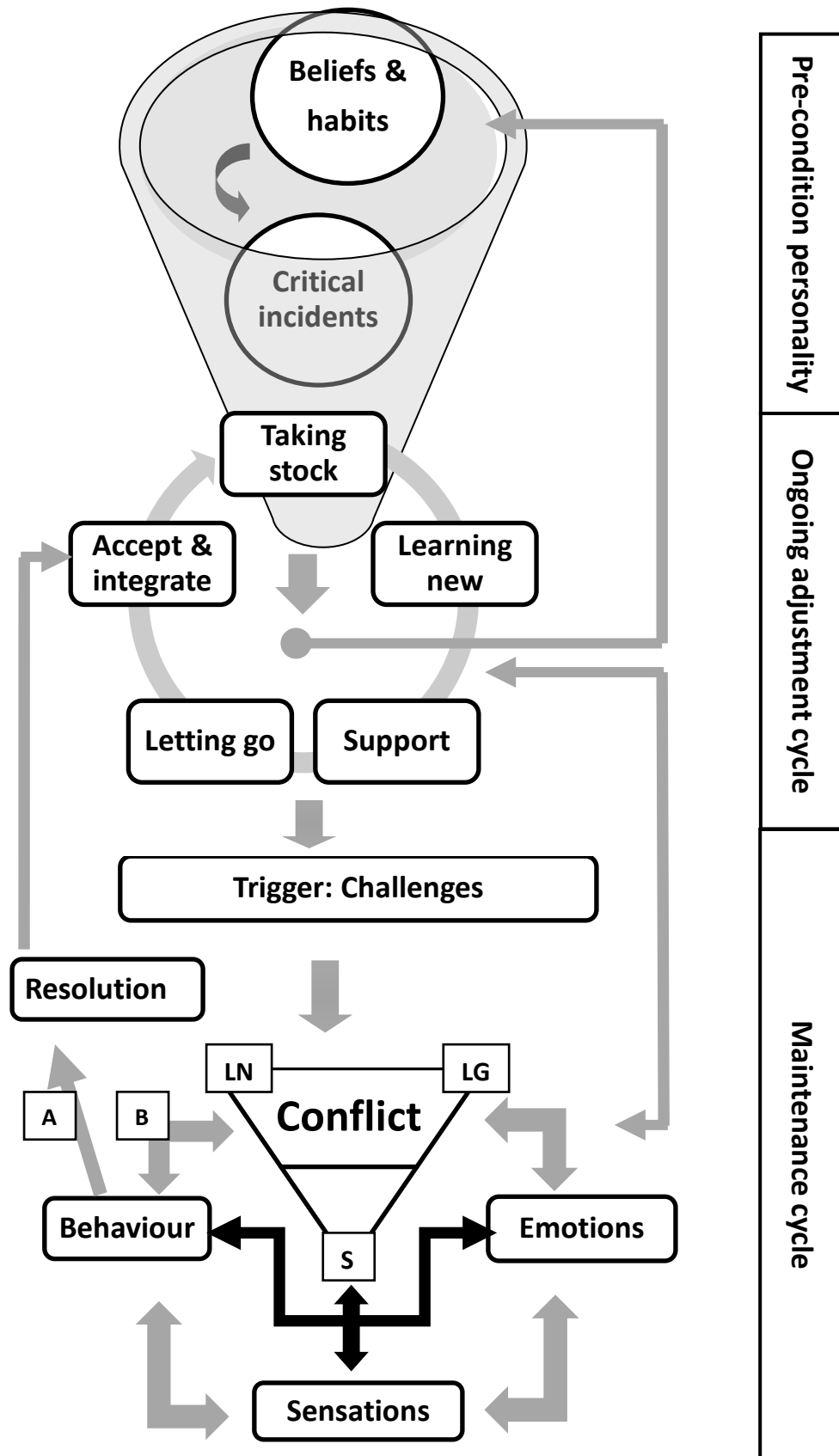


# The Integrative Model of Adjustment to Chronic Conditions (IMACC-R1) (Hammond & Hirst-Winthrop 2018)



Hammond, L.D. & Hirst-Winthrop, S. (2018). Proposal of an integrative model of adjustment to chronic conditions: An understanding of the process of psychosocial adjustment to living with type 2 diabetes. *Journal of Health Psychology*, 23(8), 1063-1074, DOI: 10.1177/1359105316664131.